

*Creating a Nation of Learners*



INSTITUTE of  
**Museum and Library**  
SERVICES



# Cyberinfrastructure and Libraries

CIC Library Initiatives Conference

Purdue University

May 13, 2008

Joyce Ray

# About the Institute of Museum and Library Services

- **IMLS** is the largest federal cultural funding agency
- **Budget:** FY08 \$263,507,000
- **Mission:** *To create strong museums and libraries that connect people to information and ideas.*
- **Goals:** to support the nation's 25,000 museums and 122,000 libraries to:
  - Sustain heritage, culture, and knowledge
  - Enhance learning and innovation
  - Support professional development

# About Cyberinfrastructure

- ***What is it?***

A technological solution to the problem of efficiently connecting data, computers and people

Research environments that support advanced data acquisition, storage, management, integration and other computing and information processing services over the Internet

Sometimes called e-Science, especially in the UK

– *Wikipedia*

# Background

***Report of the National Science Foundation Blue-Ribbon  
Advisory Panel on Cyberinfrastructure, 2003  
[updated in 2007]***

*<http://www.nsf.gov/od/oci/reports/toc.jsp>*

***Our Cultural Commonwealth: Report of the American  
Council of Learned Societies Commission on  
Cyberinfrastructure for the Humanities and Social  
Sciences, 2006***

*[http://www.acls.org/uploadedFiles/Publications/Programs/Our\\_Cultural\\_Commonwealth.pdf](http://www.acls.org/uploadedFiles/Publications/Programs/Our_Cultural_Commonwealth.pdf)*

# Challenges

- **Develop sustainable repositories - find the right economies of scale**
- **Enhance discovery & tools to support advanced research & re-use within & across repositories**
- **Address copyright barriers**
- **Build the content landscape**

# The Knowledge Universe



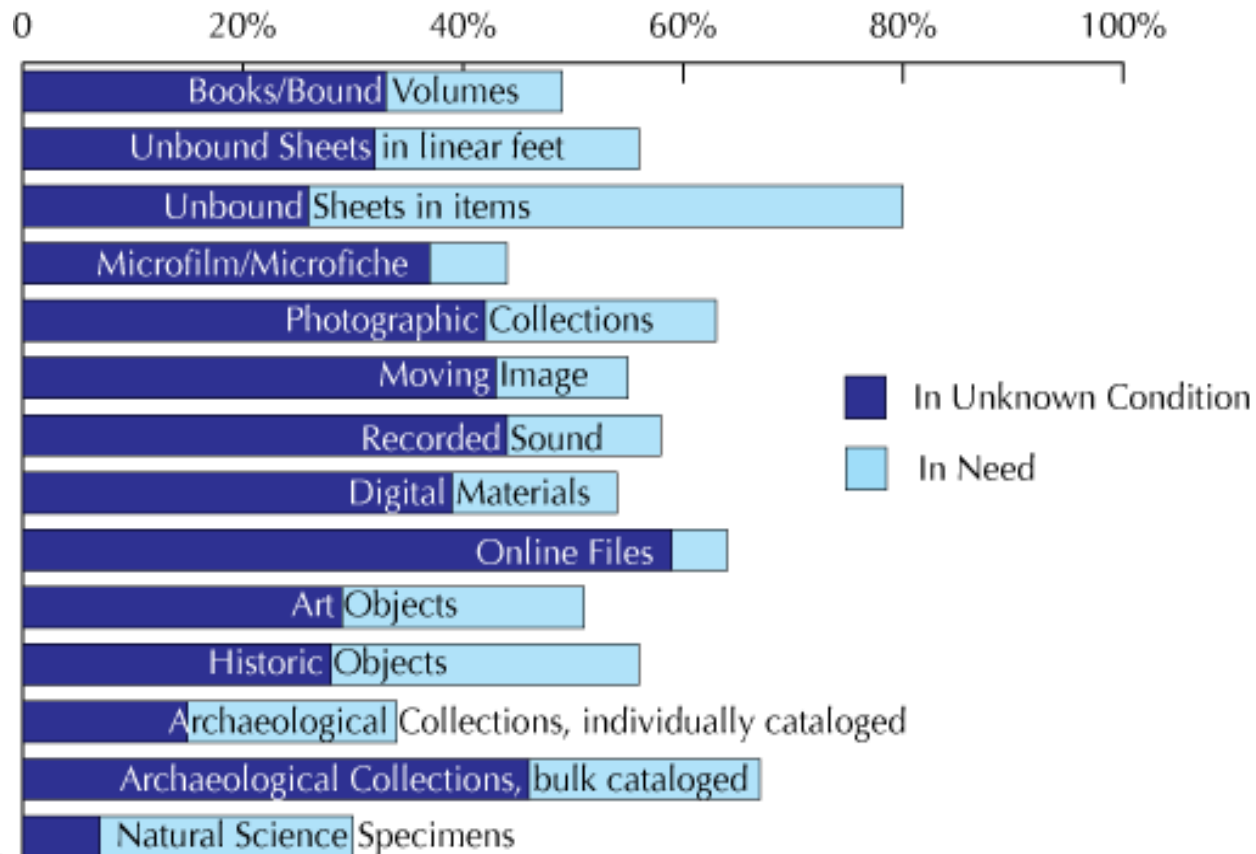
**U.S. libraries, archives and museums have accepted responsibility for preserving a total of 4.8 billion items**

# A PUBLIC TRUST AT RISK:

THE HERITAGE HEALTH INDEX REPORT  
ON THE STATE OF AMERICA'S COLLECTIONS

A Project of Heritage Preservation with the Institute of Museum and Library Services

## U.S. Collections in Unknown Condition & in Need



# IMLS Initiatives

## *Connecting to Collections: The IMLS Conservation Initiative*



***[www.imls.gov](http://www.imls.gov)***



# Digitization as a Preservation Strategy

## **WebWise 2007**

*Stewardship in the Digital Age: Managing Museum and Library Collections for Preservation and Use*

Summary of proceedings, Audio downloads & PowerPoints

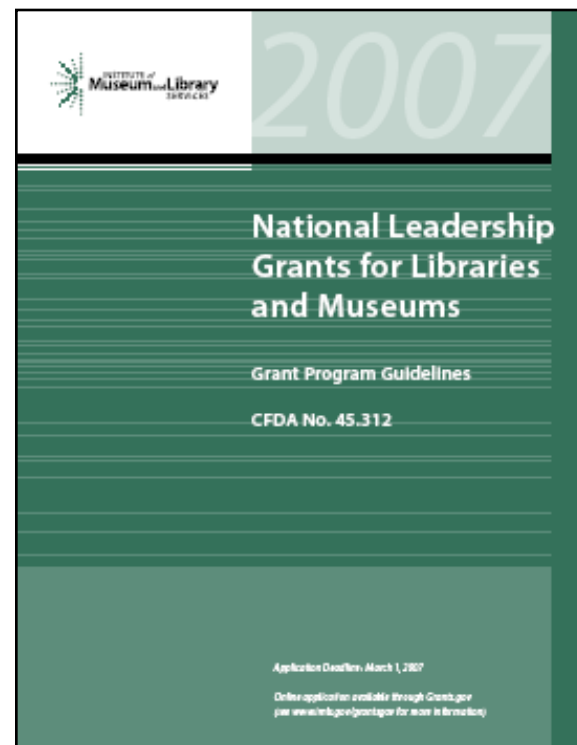
<http://www.imls.gov/news/events/webwise07>

Selected full papers published in *First Monday*, July issue

<http://www.firstmonday.org>

# National Leadership Grants

- **Research**
- **Demonstration**
- **Advancing Digital Resources**
- **Library and Museum Collaborations**
- **Collaborative Planning Grants**



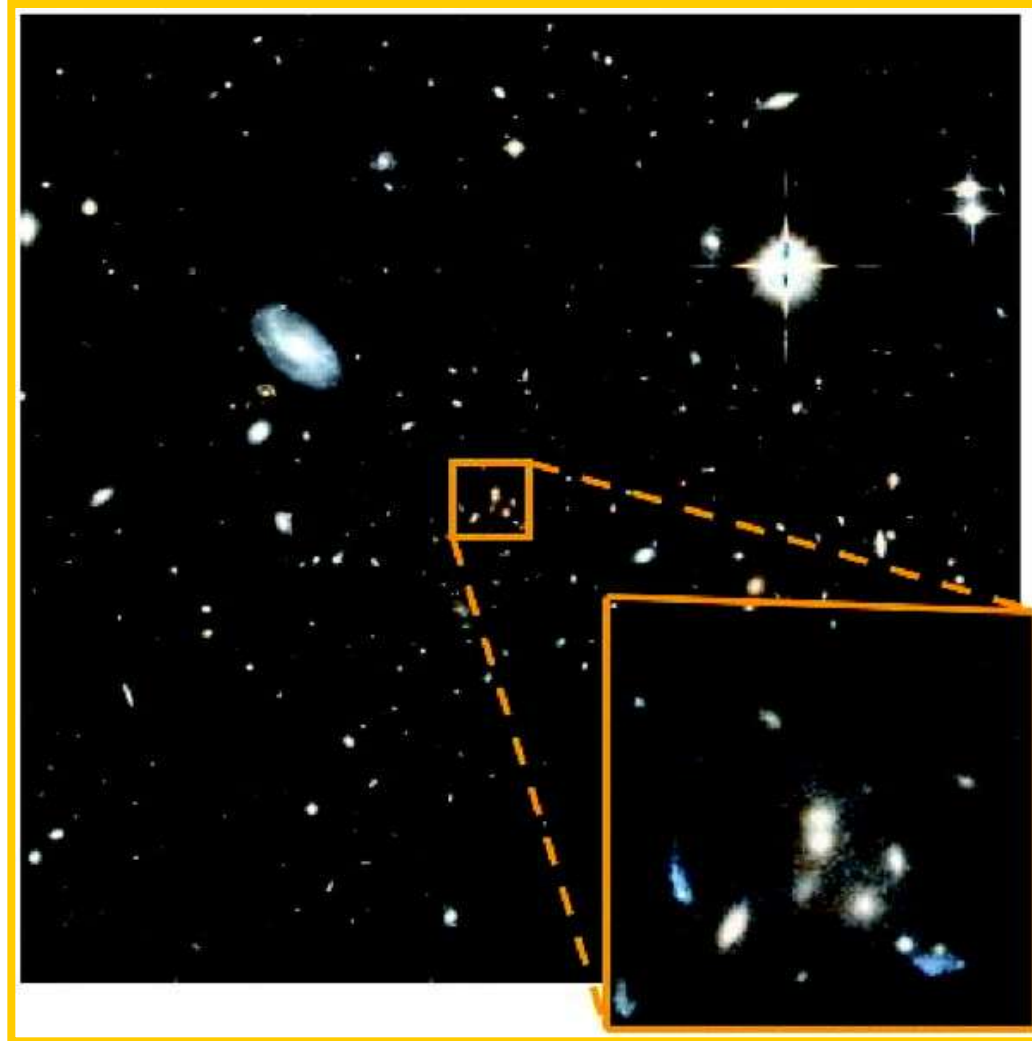
# National Leadership Grants

- **Strategic impact**
- **Innovation through research or demonstration of advances in practice**
- **Collaboration encouraged**

# Johns Hopkins University

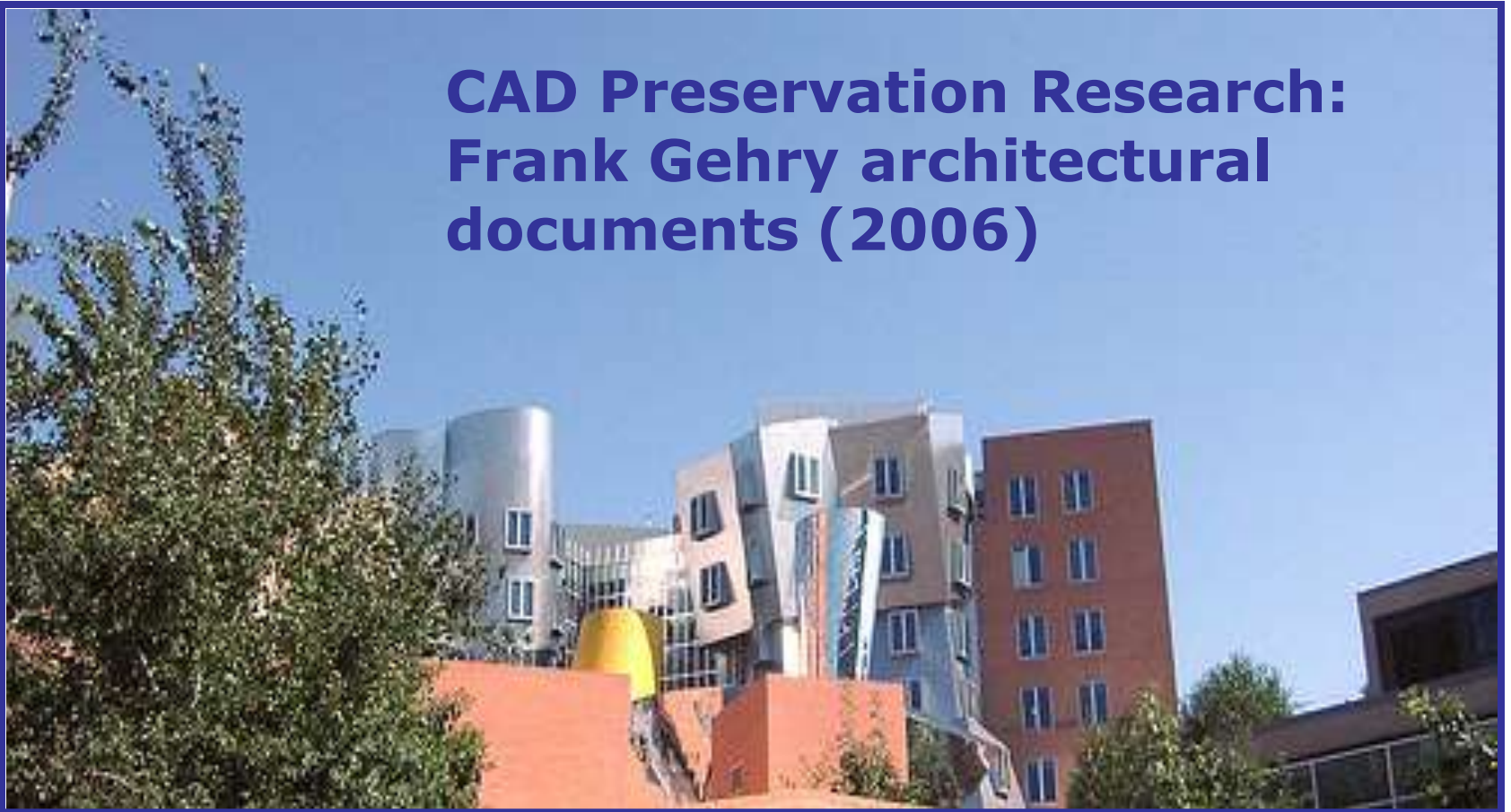
## National Virtual Observatory Digital Data Curation Program (2006)

Partnership with University  
of Edinburgh and  
University of Washington



# Massachusetts Institute of Technology

## CAD Preservation Research: Frank Gehry architectural documents (2006)



# Purdue University

## Data Curation Research (2007)

### Distributed Data Curation Center Partnership with UIUC

Case studies of researcher data/metadata workflow, curation profiles across disciplines, system requirements for managing data in repositories



PURDUE  
UNIVERSITY  
LIBRARIES

*Access. Knowledge. Success.*

# University of Illinois Urbana Champaign



## IMLS Digital Collections and Content Research (2007)

[http://imlsdcc.grainger  
.uiuc.edu/](http://imlsdcc.grainger.uiuc.edu/)

# University of Illinois Urbana Champaign



## Research on Enhanced Integration of Search and Discovery Tools (2007)

Investigation of portal mechanisms and  
search assistance techniques



# National Leadership Grants

- **Maximum award \$1,000,000**
- **1:1 cost sharing required more than \$250,000 (except research)**
- **1/3 cost sharing encouraged less than \$250,000**
- **Deadline February 1**

# National Leadership Grants

## Collaborative Planning Grants

- **Up to \$40,000 for 12 months**
- **Partnership required**
- **No conditions or commitments for future**

# Education for Digital Stewardship

## 21<sup>st</sup> Century Librarians Program

- **Masters Programs**
- **Doctoral Programs**
- **Continuing Education**
- **Pre-professional Recruitment**
- **Research & Early Careers**
- **Building Institutional Capacity**



# University of North Carolina at Chapel Hill

## Digital Curation Curriculum Development (2006)

Partnership with  
National Archives &  
Records Administration

[http://www.ils.unc.edu/  
digccurr2007/](http://www.ils.unc.edu/digccurr2007/)



# University of Illinois Urbana Champaign



**New MLS  
concentration in  
data curation  
(2006)**

Partnerships with  
science data  
centers

[http://www.lis.uiuc.edu/programs/ms/data\\_curation.html](http://www.lis.uiuc.edu/programs/ms/data_curation.html)

# 21<sup>st</sup> Century Librarians Program

- **Maximum Award \$1,000,000**
- **Cost sharing 1:1 (except student support & research)**
- **Deadline December 15**
- **Opportunities for internships in working repositories**



# Exploring New Professional Careers



## Cultural Heritage Information Professionals Workshop

Working across the  
boundaries of libraries,  
archives & museums

Sarasota Florida

April 3-4, 2008

<http://chips.ci.fsu.edu/>

# More Information

**Visit IMLS at [www.imls.gov](http://www.imls.gov)**

**Joyce Ray**  
**[jray@imls.gov](mailto:jray@imls.gov)**